

# Partnership for Reimagining Gainesville:

## A Model for Community-Based Collaboration and Meaningful Impact



## Partnership for Reimagining Gainesville

---

### Vision:

Empower and resource impacted-people as leaders of social change.

### Mission:

Provide a supportive platform for community-driven ideas to actualize into impact-generating projects by fostering relationships, building capacity, and increasing access to resources for all Gainesville neighbors.

## PRG Intro Video

---



<https://youtu.be/3liPAiSgPqM>

## Partnership for Reimagining Gainesville – What is it?

---

A model of **community-based collaboration** and **meaningful impact**

- Aims to develop and enhance the capacity of our community to **address complex social problems** in the Gainesville area
- Fosters inter-organizational partnerships founded on principles of **respect, transparency, and reciprocity**
- Works with community stakeholders to actively identify and **support impact-focused ideas**, projects or initiatives **driven by community needs**
- **Mobilizes access to resources** needed to support community stakeholders' ideas, including **micro-grants, technical assistance and mentoring**
- Is coordinated by the Community Foundation of North Central Florida
- Was established by the University of Florida together with the City of Gainesville

## Partnership for Reimagining Gainesville - Why did it Start?

---

### 2017

- City of Gainesville and University of Florida committed to partnering to address economic and social disparities in Gainesville. "UF-City Partnership" MOU signed in Feb 2017.
- UF Senior VP/COO, Dr. Charlie Lane, sponsored over \$350,000 of grant funding for seven "UF-Gainesville Research Award" projects conducted as partnerships between UF faculty and community leaders
- Friendship 7 sponsored the "UNDERSTANDING RACIAL INEQUITY IN ALACHUA COUNTY" report, prepared by UF's Bureau of Economic and Business Research (BEBR)

### 2018

- Results of the BEBR report were published; Final results of the seven UF-Gainesville Research Award Projects were shared
- City of Gainesville built on the Blue Ribbon Report that emphasized Gainesville as being a Citizen-Centered, People Empowered city.
- Greater Gainesville Collaboration Initiative – UF Steering Committee serving to advise UF leadership on opportunities to improve community engagement across the institution

### 2019 - 2020

- City, UF and community partners worked to develop possible models for operationalizing UF-City Partnership
- Presentations to institutions' leadership, with funding commitment granted to pilot PRG

## The Partnership Model - What We've Learned

---

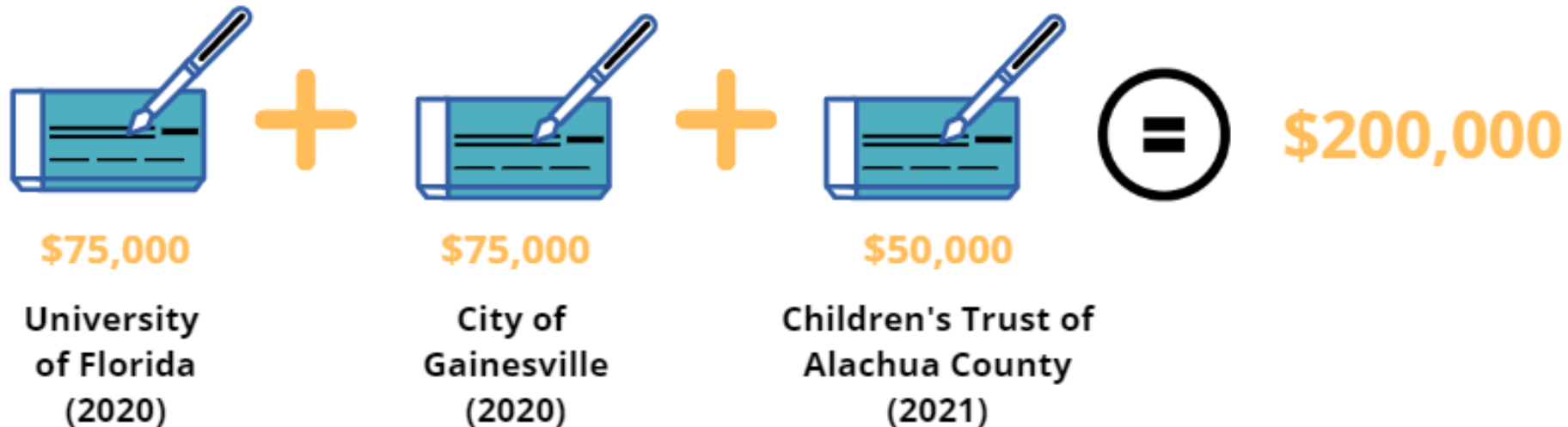
To be successful in supporting the Gainesville community, the Partnership Model needs to:

- Require a **commitment** from Anchor Institutions to provide **support and resources beyond funding** alone to build long-term impact together with community stakeholders.
- Facilitate new collaborations that **address community needs** and take their cue from community members.
- Support collaborations and activities that **build capacity** in the community together with key community stakeholders.
- Ensure a community-driven focus by **including community members** throughout the whole process... from idea through implementation and maintenance.
- Be **flexible** in the design and implementation process to accommodate the needs of all parties involved, ensuring **mutual benefit and reciprocity** are achieved and **sustained**.

## Partnership – Funding

---

Start-up funding was provided via charitable donations from our founding partners in 2020 and 2021, allowing PRG to launch in 2021:



## **Partnership Model –** **Key components for meaningful engagement and impact**

The Partnership Model aims to:

1. **Identify and evaluate ideas**
2. **Support and resource ideas**
3. **Evaluate and assess outcomes**
4. **Promote sustainable impact**
5. **Build community capacity**



## Involvement and Impact – What Success Looks Like

### Strengthen Partners and Leaders

Link experience and resources to the institutions, local businesses, nonprofits, and individuals who are intent on making our community better.



### Adapting, Scaling & Sharing

Promote adaptation and adoption of beneficial solutions for scale-up and share them broadly across the network of partners.



### Test and Evaluate What Works

Contribute the financial, human and intellectual resources that can try out potentially impactful and beneficial solutions.



### Capacity Building

Establish partnerships that leverage public, philanthropic, and private resources with community knowledge, skills and experience to support community-driven and needs-based approaches.



## Local Food Systems



... to support ideas that enhance food accessibility and that help the community build comprehensive and sustainable food systems.

## Community Health & Wellness



... to support collaborations that facilitate programs and services that promote health and well-being in our community.

## Education & Vocational Training

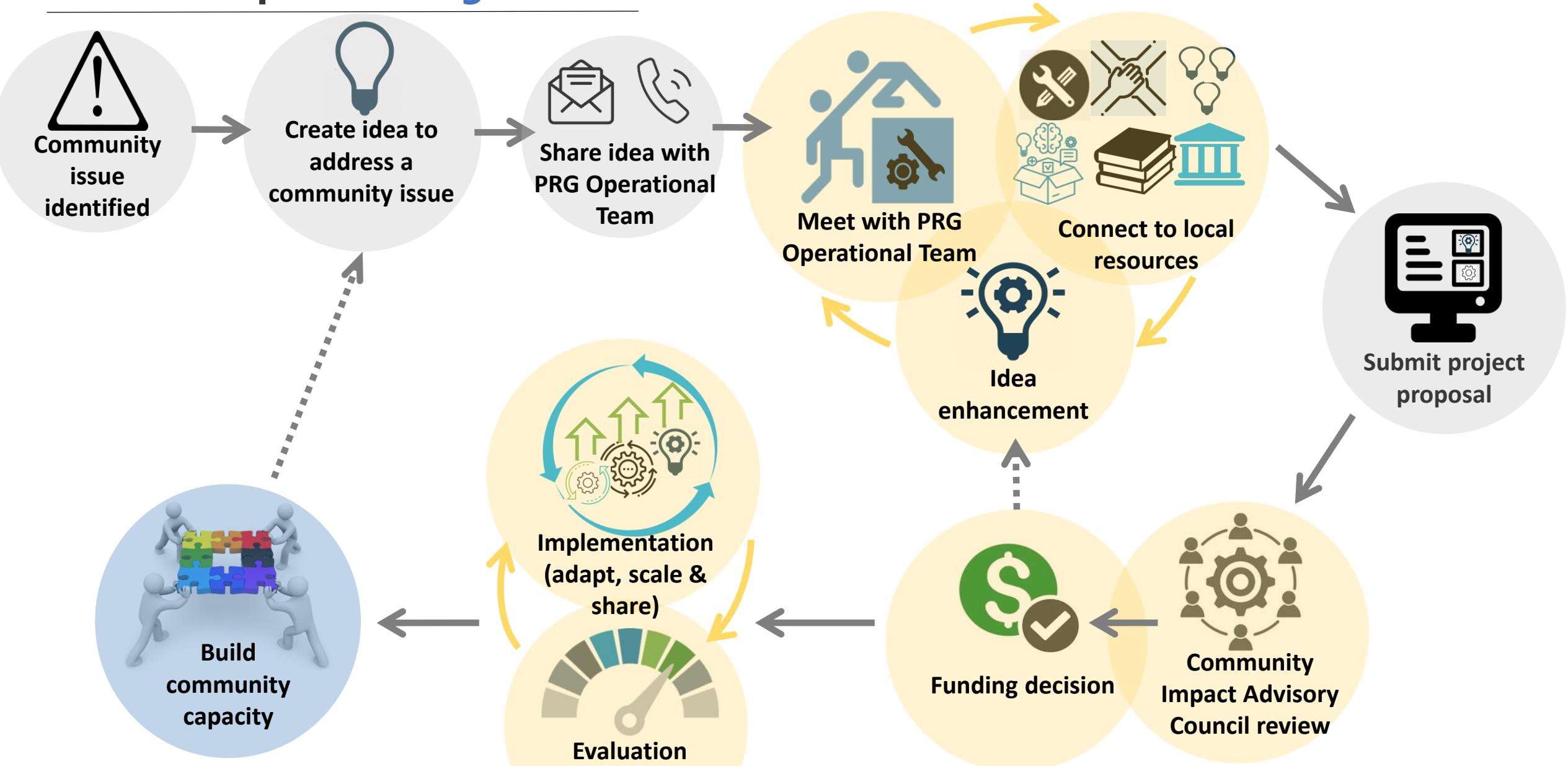


... to support quality learning and training programs that improve education and job opportunities.



... to support ...

# Partnership – Working Process



## Advisory Council – Cohort I (2021-2022)

- Community Leaders
- Community Activists
- Community Builders
- Engaged and Connected
- Knowledgeable and Experienced



Tom Tonkavich



Jacob Larson



Carla Lewis



Maggie Labarta



Lindsay Kallman



Danielle Butler



Carole Zegel

## Advisory Council – Cohort II (2022-2023)

---



Satori Days

Pastor Gerard  
Duncan



Angela  
Howard

Veita Jackson-  
Carter



## Advisory Council – Cohort III (2023-2024)

---



Kevin Scott

Rahkiah  
Brown



Charna  
Cohn

Candice King



# PRG Operational Team

---



Barzella Papa  
(CFNCF)



Andrew Telles  
(UF)



Karissa Raskin  
(City)



Nancy Parks  
(CFNCF)

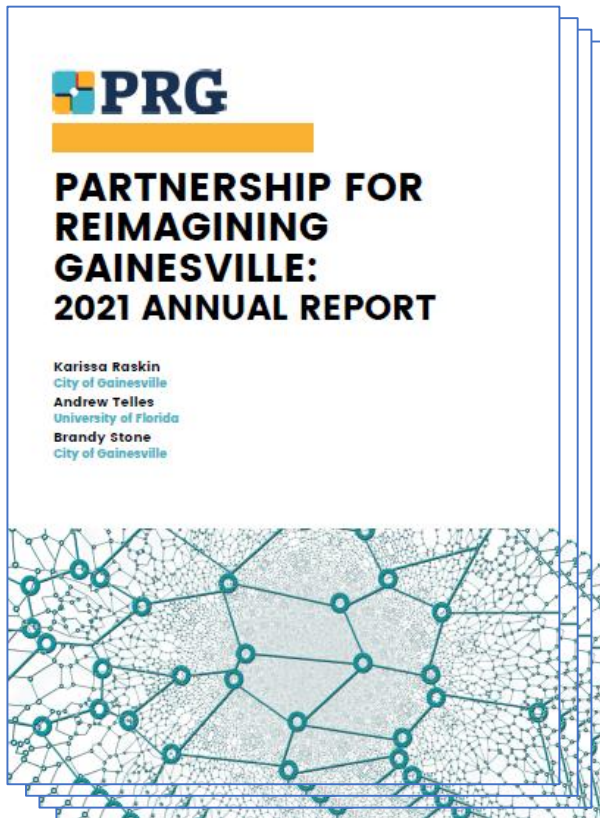


Omar Hernandez  
(UF)



## Scope of Accomplishments - 2021

---



PRG supported 14 Reimagineer projects with technical assistance in 2021. Three of those projects applied for and received a PRG Grant.

The total amount of grants awarded and utilized by Reimagineers in 2021 was approximately \$42,000.

Hosted a Celebration and Showcase event to raise awareness of PRG, and increase visibility of Reimagineers.



## Scope of Accomplishments - 2022

---



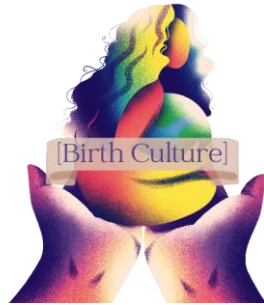
PRG supported 10 new Reimagineer projects with technical assistance in 2022, as well seven continuing Reimagineers from 2021.

Two new PRG grants were awarded in 2022, totaling approximately \$15,000.

Implemented a ReimagiNetwork Series to improve collaboration and social networking opportunities for Reimagineers. Also hosted Capacity-Building Workshops per request of Reimagineers.

## Scope of Accomplishments: Jan – March 2023

---



In the first three months of 2023, PRG has supported eight new Reimagineers, as well as 11 returning Reimagineers with technical assistance.

Two PRG grants have been awarded approximately \$30,000 total.

PRG is also implementing a more robust system for measuring impact of our work in the community, as well as the achievements of Reimagineers.

## Scope of Accomplishments – Reimagineer Testimonial



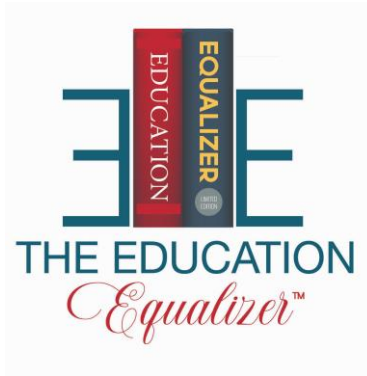
"Three years ago, I met Andrew Telles from PRG. I had no idea how instrumental he would be in helping our nonprofit, PEAK Literacy, more than quadruple our impact in Alachua County. PRG worked with us to refine the scope of our work and the structure of our program. They guided us through the grant application process and funded a pilot program that helped us provide individualized reading instruction to middle schoolers in an afterschool setting.

In addition to helping us with organization, implementation, and communication, this pilot project helped us design a replicable model for tutoring students in afterschool settings. Karissa provided evaluation metric tools for the data we collected which helped us to measure our impact in order to qualify for additional funding from other grant organizations.

Becoming a PRG Reimagineer is a great way to kickstart your nonprofit. They provide innovative ideas, resources, and connections to help you broaden your impact. PEAK literacy is extremely grateful for PRG!"

~Leah Galione – Executive Director of PEAK Literacy

## Scope of Accomplishments – Reimagineer Testimonial



"If it weren't for PRG, The Education Equalizer Foundation would not have had the necessary resources to host College Prep 101, our pilot mentorship program to expose mentees to college.

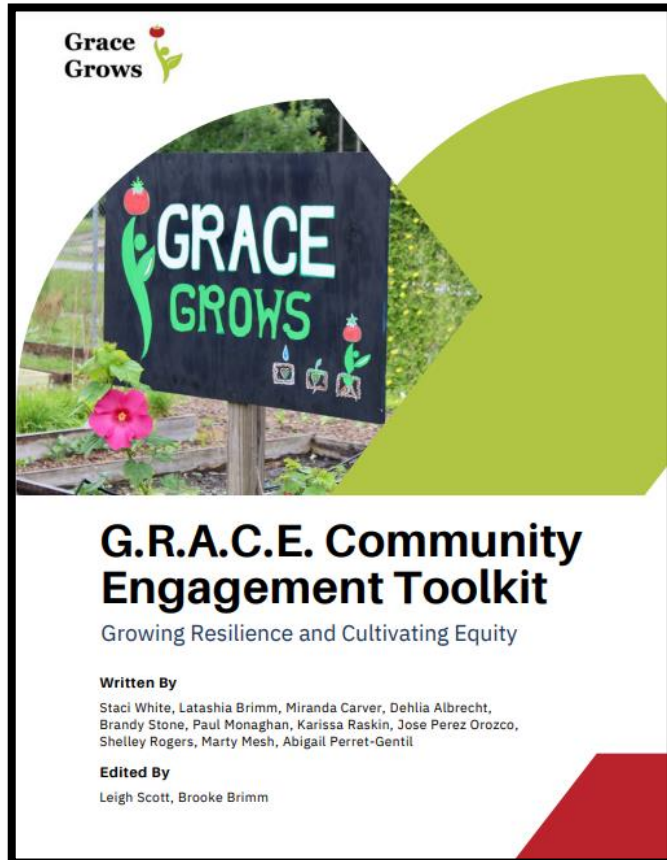
We aimed to assist 20 students over the summer but with PRG support we surpassed our goal. We have helped nearly 100 students throughout the academic year to complete the FAFSA, apply for scholarships, attend college tours, learn study skills to improve their ACT/SAT scores, and get accepted to college!

Our students have been accepted to premier institutions, including but not limited to: University of Florida, Princeton University, Tennessee State University, Bethune Cookman University, Santa Fe College, and many more.

We are proud that PRG believed in our vision and helped us execute our plan to continue the college-going culture in Gainesville, FL and nationwide!"

~Dr. Carjamin Scott – Founder of the Education Equalizer Foundation

## Scope of Accomplishments – Reimagineer Testimonial



PRG's support has helped our organization to grow in our impact and capacity in a myriad of ways. They provided mentorship and technical support in the creation of a Community Engagement Toolkit to teach others how to engage with communities in an equitable manner. The toolkit was based on the methods we used in the community to address food justice issues. This toolkit has drawn attention from food justice experts across the country, is being published, and is in use by the University of Florida to create a curriculum for students and faculty interested in how to do true community driven work.

Our partnership with PRG allowed for us to surmount the hurdle that many young organizations face in building capacity with little resources. It has led to growth of our organization by affording us the capacity to promote the success of our food justice work *and* new models of engagement that help the much larger community participate effectively. We now have opportunities to continue and expand on the work we began with food justice and centering the voices of impacted people. We are very grateful for PRG's partnership.

~Abigail Perret-Gentil – Founder / Executive Director of Grace Grows

## CALL TO ACTION – PRG Needs Your Support!

PRG is on-track to support over 30 new Reimagineers in 2023, and deplete the remaining \$100,000 funds by Dec 31, 2023. Additional funding is essential for PRG to continue.



**Help us empower, support and provide resources to the true agents of change in our community!**



## *There are many ways to get involved with PRG...*

Submit your  
community-driven  
ideas for change



[https://tinyurl.com/  
PRG-Impact-Ideas](https://tinyurl.com/PRG-Impact-Ideas)

Contact us to  
contribute your time  
and skills to projects



[PRG@CFNCF.ORG](mailto:PRG@CFNCF.ORG)

Donate to the PRG  
fund to support  
micro-grants



[https://tinyurl.com/  
PRG-Donate](https://tinyurl.com/PRG-Donate)