

Partnership for Reimagining Gainesville:

A Model for Community-Based Collaboration and Meaningful Impact

Andrew Telles – Director of Collaborative Initiatives, University of Florida

Bobbie Griffith – Director of Strategic Initiatives, City of Gainesville

Karissa Raskin – Civic Collaboration Specialist, City of Gainesville

Barzella Papa – President and CEO, Community Foundation North Central Florida

Contact us at PRG@cfncf.org

Partnership for Reimagining Gainesville – What is it?

The Partnership for Reimagining Gainesville Fund (**PRG**):

- Is a model of **community-based collaboration** and **meaningful impact**
- Aims to develop and enhance the capacity of our community to **address complex social problems** in the Gainesville area
- Fosters inter-organizational partnerships founded on principles of **respect, transparency, and reciprocity**
- Works with community stakeholders to actively identify and **support impact-focused ideas**, projects or initiatives **driven by community needs**
- Is coordinated by the Community Foundation of North Central Florida
- Was established by the University of Florida together with the City of Gainesville

Partnership – The Partnership Model: What We've Learned

To be successful in supporting the Gainesville community, the Partnership Model needs to:

- Require a **commitment** from Anchor Institutions to provide **support and resources beyond funding** alone to build long-term impact together with community stakeholders.
- Facilitate new collaborations that **address community needs** and take their cue from community members.
- Support collaborations and activities that **build capacity** in the community together with key community stakeholders.
- Ensure a community-driven focus by **including community members** throughout the whole process... from idea through implementation and maintenance.
- Be **flexible** in the design and implementation process to accommodate the needs of all parties involved, ensuring **mutual benefit and reciprocity** are achieved and **sustained**.

Partnership Model –

Key components for meaningful engagement and impact

The Partnership Model aims to:

1. **Identify and evaluate ideas**
2. **Support and resource ideas**
3. **Evaluate and assess outcomes**
4. **Promote sustainable impact**
5. **Build community capacity**

Involvement and Impact – What Success Looks Like

Strengthen Partners and Leaders



Link experience and resources to the institutions, local businesses, nonprofits, and individuals who are intent on making our community better.

Adapting, Scaling & Sharing

Promote adaptation and adoption of beneficial solutions for scale-up and share them broadly across the network of partners.



Test and Evaluate What Works

Contribute the financial, human and intellectual resources that can try out potentially impactful and beneficial solutions.



Capacity Building

Establish partnerships that leverage public, philanthropic, and private resources with community knowledge, skills and experience to support community-driven and needs-based approaches.



Focus Areas – Partnership for Reimagining Gainesville

Local Food Systems



... to support ideas that enhance food accessibility and that help the community build comprehensive and sustainable food systems.

Community Health & Wellness



... to support collaborations that facilitate programs and services that promote health and well-being in our community.

Education & Vocational Training

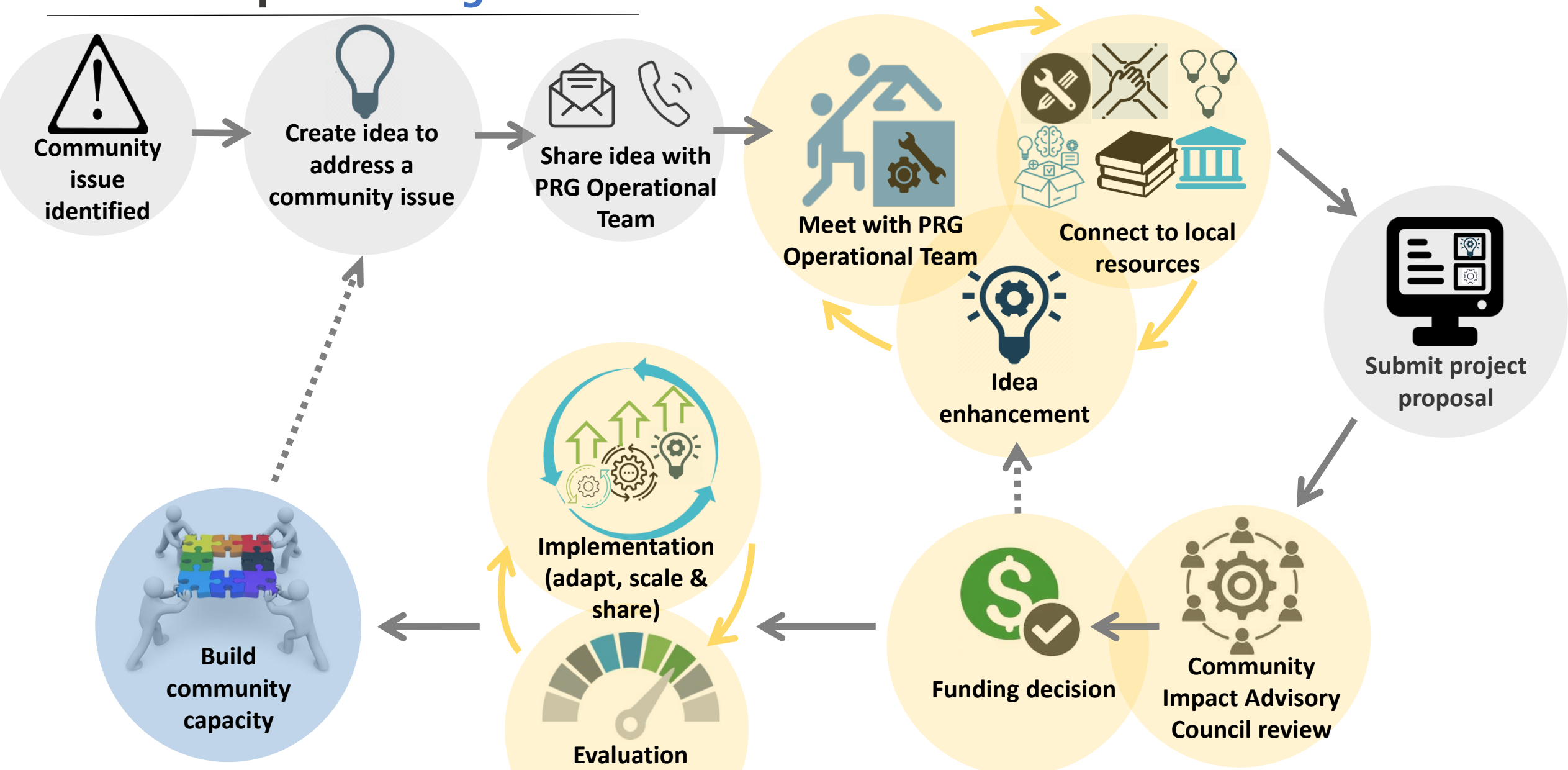


... to support quality learning and training programs that improve education and job opportunities.



... to support ...

Partnership – Working Process



Partnership – Submit your Ideas

We want to support your ideas for positive community change!

Contact us at PRG@cfncf.org or submit your ideas here www.cfncf.org/PRG so we start collaborating!